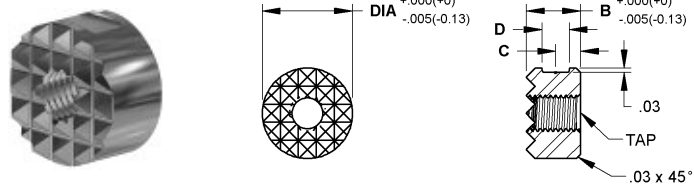


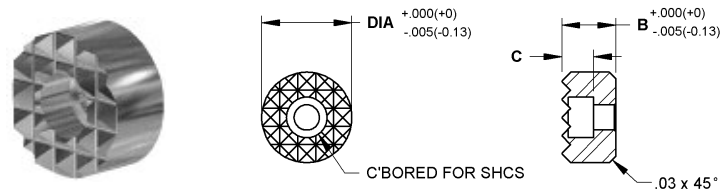
Round – Steel – Serrated – Tapped Hole



Made from M-2 high speed steel. Hardened to Rc 60/62 with black oxide finish. Serrated for sure holding in tough applications. Thru-hole tap.

Part Number	Dia	B Height	C Flat Pos.	D Flat Width	Tap Size	Tooth Pattern
FG-105	3/8	3/8	11/64	3/16	#10-32	EF
FG-110	3/8	1/2	15/64	3/16	#10-32	EF
FG-115	1/2	3/8	11/64	3/16	#10-32	Fine
FG-120	1/2	1/2	15/64	3/16	#10-32	Fine
FG-125	1/2	.651	19/64	3/16	#10-32	Fine
FG-130	5/8	3/8	11/64	3/16	1/4-28	Fine
FG-135	5/8	1/2	15/64	3/16	1/4-28	Fine
FG-140	3/4	3/8	11/64	3/16	1/4-28	Fine
FG-145	3/4	1/2	15/64	3/16	1/4-28	Fine
FG-150	1	3/8	11/64	3/16	1/4-28	Fine
FG-155	1	1/2	15/64	3/16	1/4-28	Fine

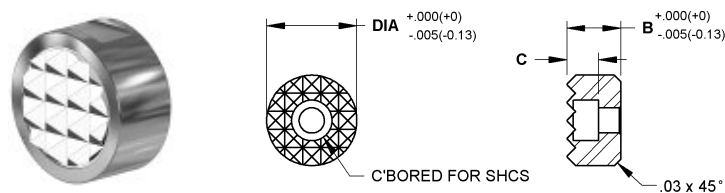
Round – Steel – Serrated – Counter Bored Hole



Made from M-2 high speed steel. Hardened to Rc 60/62 with black oxide finish. Serrated for sure holding in tough applications. Counter bored hole for front mounting.

Part Number	Dia	B Height	C C'Bore Depth	C'Bore to fit	Tooth Pattern
FG-205	1/2	3/8	7/32	#8 SHCS	Fine
FG-210	1/2	1/2	7/32	#8 SHCS	Fine
FG-215	5/8	3/8	7/32	#8 SHCS	Fine
FG-220	5/8	1/2	7/32	#8 SHCS	Fine
FG-225	3/4	3/8	1/4	#10 SHCS	Fine
FG-230	3/4	1/2	1/4	#10 SHCS	Fine
FG-235	1	1/2	5/16	1/4 SHCS	Fine

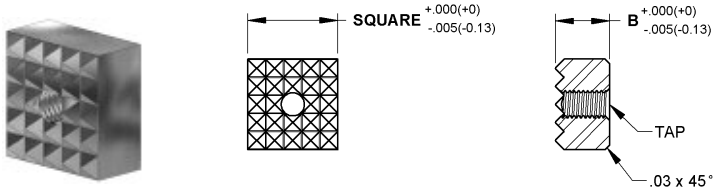
Round – Carbide Tipped – Serrated – Tapped Hole



Constructed with a serrated carbide gripper pad brazed to a heat treated alloy steel body. Blind-hole tap for back side mounting.

Part Number	Dia	B Height	C Flat Pos.	D Flat Width	E Pad Dia.	Tap	Tooth Pattern
FG-305	3/8	3/8	11/64	3/16	5/16	#10-32	EF
FG-310	3/8	1/2	15/64	3/16	5/16	#10-32	EF
FG-315	1/2	1/2	15/64	3/16	3/8	#10-32	Fine
FG-320	1/2	3/8	11/64	3/16	3/8	#10-32	Fine
FG-325	1/2	.651	19/64	3/16	3/8	#10-32	Fine
FG-330	5/8	3/8	11/64	3/16	1/2	1/4-28	Fine
FG-335	5/8	1/2	15/64	3/16	1/2	1/4-28	Fine
FG-340	3/4	3/8	11/64	3/16	5/8	1/4-28	Fine
FG-345	3/4	1/2	15/64	3/16	5/8	1/4-28	Fine
FG-350	1	3/8	11/64	3/16	3/4	1/4-28	Fine

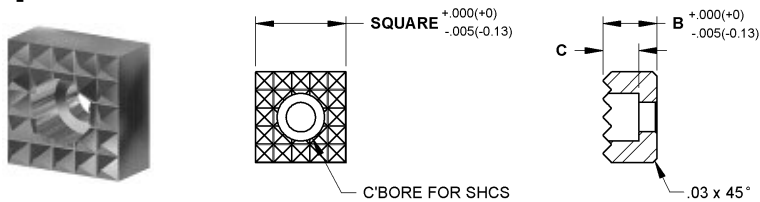
Square – Steel – Serrated – Tapped Hole



Made from high speed steel. Serrated for sure holding in tough applications. Thru-hole tap.

Part Number	Square	B Height	Tap	Tooth Pattern
FG-405	3/8	3/8	#10-32	EF
FG-410	3/8	1/2	#10-32	EF
FG-415	1/2	3/8	#10-32	Fine
FG-420	1/2	1/2	#10-32	Fine
FG-425	5/8	3/8	#10-32	Fine
FG-430	5/8	1/2	#10-32	Fine
FG-435	3/4	3/8	#10-32	Fine
FG-440	3/4	1/2	#10-32	Fine
FG-445	1	3/8	1/4-28	Fine
FG-450	1	1/2	1/4-28	Fine

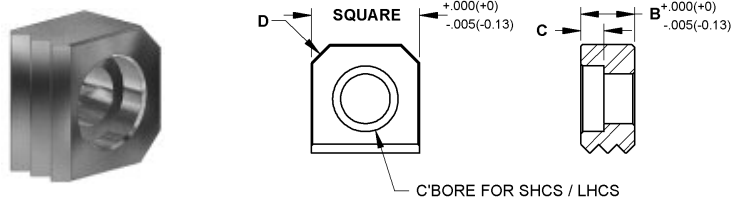
Square – Steel – Serrated – Counter Bored Hole



Made from high speed steel. Serrated for sure holding in tough applications. Counter bored hole for front mounting.

Part Number	Square	B Height	C C' Bore Depth	C' Bore to fit	Tooth Pattern
FG-505	1/2	3/8	1/4	#10 SHCS	Fine
FG-510	1/2	1/2	1/4	#10 SHCS	Fine
FG-515	5/8	3/8	1/4	#10 SHCS	Fine
FG-520	5/8	1/2	1/4	#10 SHCS	Fine
FG-525	3/4	1/2	5/16	1/4 SHCS	Fine
FG-530	1	1/2	5/16	1/4 SHCS	Fine

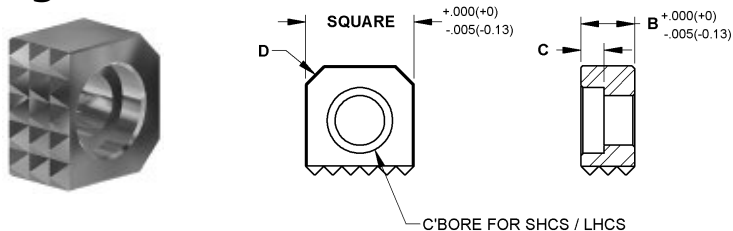
Edge – Steel – Straight Serrations – Counter Bored Hole



Square serrated edge grippers have straight serrations on one side. Made from high speed steel. They are counter bored for mounting with socket head cap screw.

Part Number	Square	B Height	C C'Bores for x Depth	D Chamfer	Tooth Pattern
FG-605	3/8	1/4	#6 SHCS X .200	1/16x45°	EF
FG-610	3/8	3/8	#6 SHCS X .200	1/16x45°	EF
FG-615	3/8	1/2	#6 SHCS X .200	1/16x45°	EF
FG-620	1/2	1/4	#8 SHCS x .220	3/32x45°	Fine
FG-625	1/2	3/8	#8 SHCS x .220	3/32x45°	Fine
FG-630	1/2	1/2	#8 SHCS x .220	3/32x45°	Fine
FG-635	5/8	1/4	1/4 LHSCS x .130	1/8x45°	Fine
FG-640	5/8	3/8	1/4 LHSCS x .130	1/8x45°	Fine
FG-645	5/8	1/2	1/4 LHSCS x .130	1/8x45°	Fine
FG-650	3/4	1/4	5/16 LHSCS x .161	1/8x45°	Fine
FG-655	3/4	3/8	5/16 LHSCS x .161	1/8x45°	Fine
FG-660	3/4	1/2	5/16 LHSCS x .161	1/8x45°	Fine
FG-665	1	1/4	3/8 LHSCS x .194	1/8x45°	Fine
FG-670	1	3/8	3/8 LHSCS x .194	1/8x45°	Fine
FG-675	1	1/2	3/8 LHSCS x .194	1/8x45°	Fine

Edge – Steel – Serrated – Counter Bored Hole



Square serrated edge grippers have teeth on one side. Made from high speed steel. They are counter bored for mounting with socket head cap screw.

Part Number	Square	B Height	C C'Bores for x Depth	D Chamfer	Tooth Pattern
FG-705	3/8	1/4	#6 SHCS X .146	1/16x45°	EF
FG-710	3/8	3/8	#6 SHCS X .146	1/16x45°	EF
FG-715	3/8	1/2	#6 SHCS X .146	1/16x45°	EF
FG-720	1/2	1/4	#8 SHCS x .170	3/32x45°	Fine
FG-725	1/2	3/8	#8 SHCS x .175	3/32x45°	Fine
FG-730	1/2	1/2	#8 SHCS x .175	3/32x45°	Fine
FG-735	5/8	1/4	1/4 LHCS x .130	1/8x45°	Fine
FG-740	5/8	3/8	1/4 LHCS x .130	1/8x45°	Fine
FG-745	5/8	1/2	1/4 LHCS x .130	1/8x45°	Fine
FG-750	3/4	1/4	5/16 LHCS x .161	1/8x45°	Fine
FG-755	3/4	3/8	5/16 LHCS x .161	1/8x45°	Fine
FG-760	3/4	1/2	5/16 LHCS x .161	1/8x45°	Fine
FG-765	1	1/4	3/8 LHCS x .194	1/8x45°	Fine
FG-770	1	3/8	3/8 LHCS x .194	1/8x45°	Fine
FG-775	1	1/2	3/8 LHCS x .194	1/8x45°	Fine